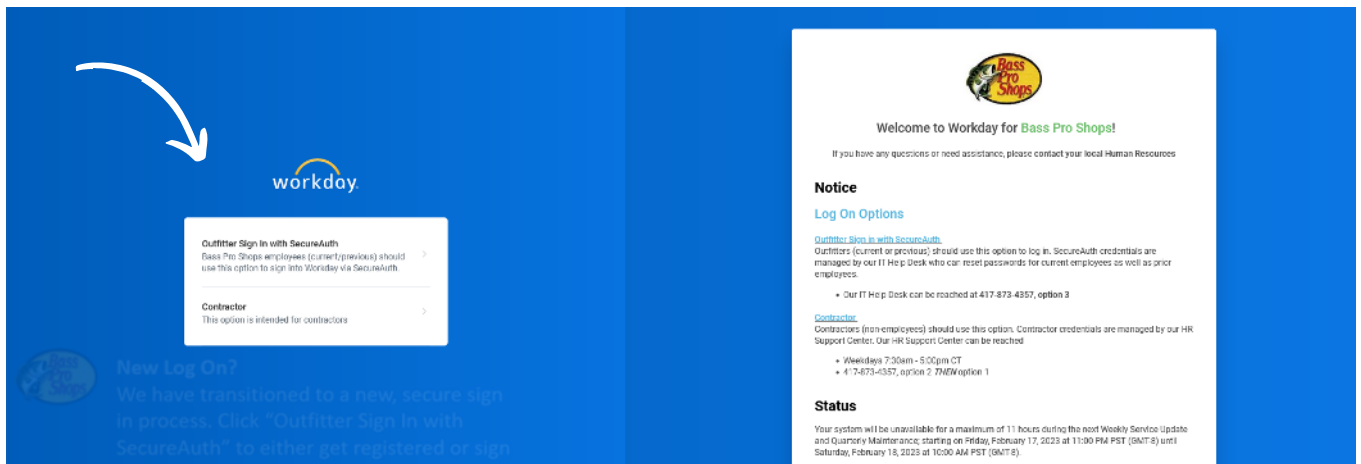


How to sign up

1. Login to your Workday account with your FlexID

Workday Login



workday

Outfitter Sign In with SecureAuth
Bass Pro Shops employees (current/previous) should use this option to sign into Workday via SecureAuth.

Contractor
This option is intended for contractors.

New Log On?
We have transitioned to a new, secure sign in process. Click "Outfitter Sign In with SecureAuth" to either get registered or sign in.

Welcome to Workday for Bass Pro Shops!
If you have any questions or need assistance, please contact your local Human Resources.

Notice

Log On Options

Outfitter Sign In with SecureAuth
Outfitters (current or previous) should use this option to log in. SecureAuth credentials are managed by our IT Help Desk who can reset passwords for current employees as well as prior employees.

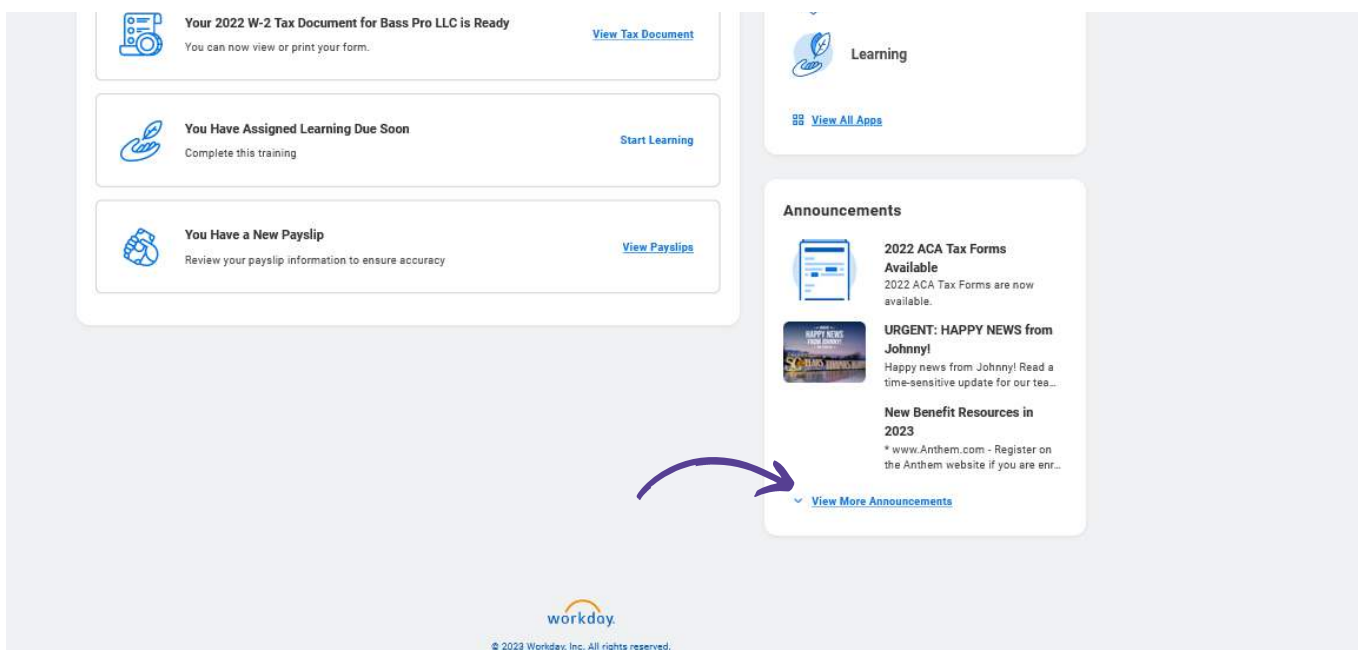
- Our IT Help Desk can be reached at 417-873-4357, option 3

Contractor
Contractors (non employees) should use this option. Contractor credentials are managed by our HR Support Center. Our HR Support Center can be reached

- Weekdays 7:30am - 5:00pm CT
- 417-873-4357, option 2 **7NOW** option 1

Status
Your system will be unavailable for a maximum of 11 hours during the next Weekly Service Update and Quarterly Maintenance, starting on Friday, February 17, 2023 at 11:00 PM PST (GMT-8) until Saturday, February 18, 2023 at 10:00 AM PST (GMT-8).

2. Locate the announcements tab and select view more announcements if you do not see the Active&Fit Logo



Your 2022 W-2 Tax Document for Bass Pro LLC is Ready
You can now view or print your form. [View Tax Document](#)

You Have Assigned Learning Due Soon
Complete this training [Start Learning](#)

You Have a New Payslip
Review your payslip information to ensure accuracy. [View Payslips](#)

Learning
[View All Apps](#)

Announcements

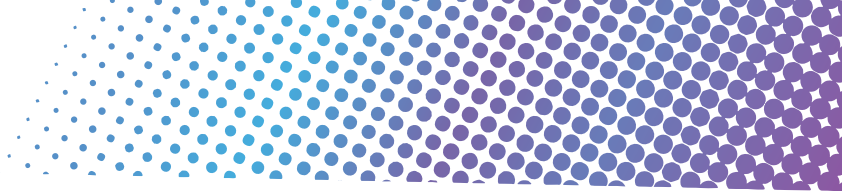
2022 ACA Tax Forms Available
2022 ACA Tax Forms are now available.

URGENT: HAPPY NEWS from Johnny!
Happy news from Johnny! Read a time-sensitive update for our tea...

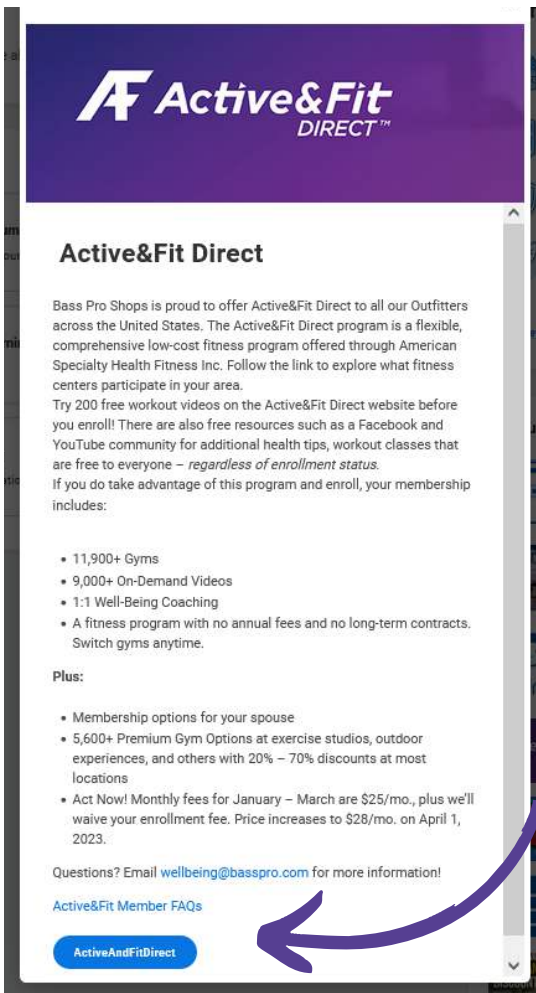
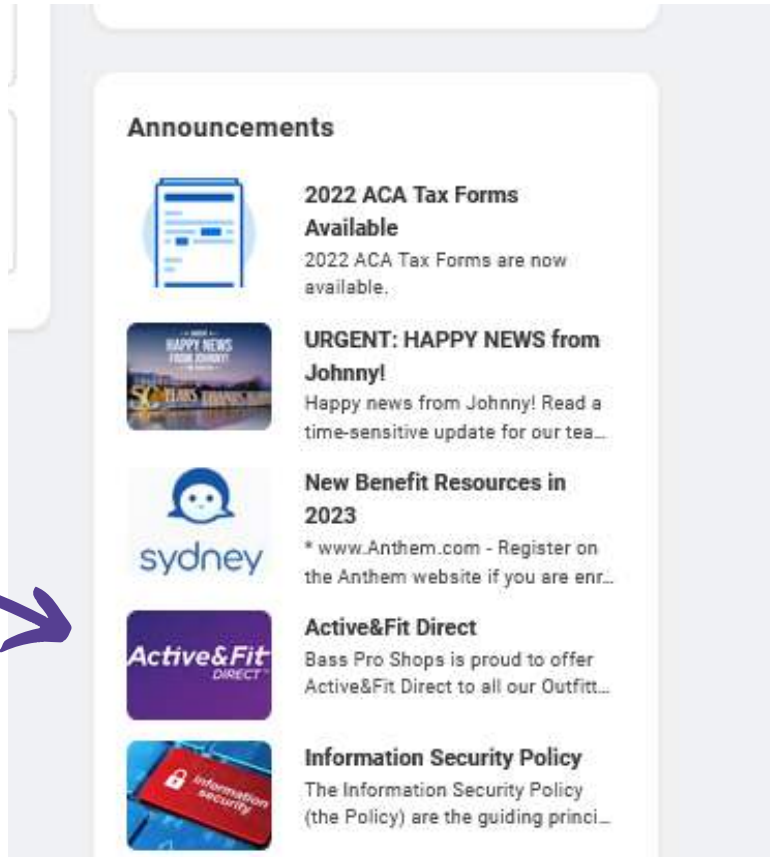
New Benefit Resources in 2023
* www.Anthem.com - Register on the Anthem website if you are enr...

[View More Announcements](#)

workday
© 2023 Workday, Inc. All rights reserved.



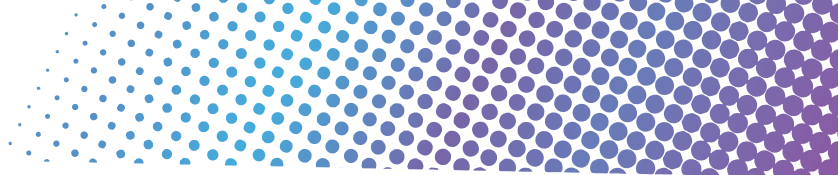
3. Click on the Active&Fit Direct announcement



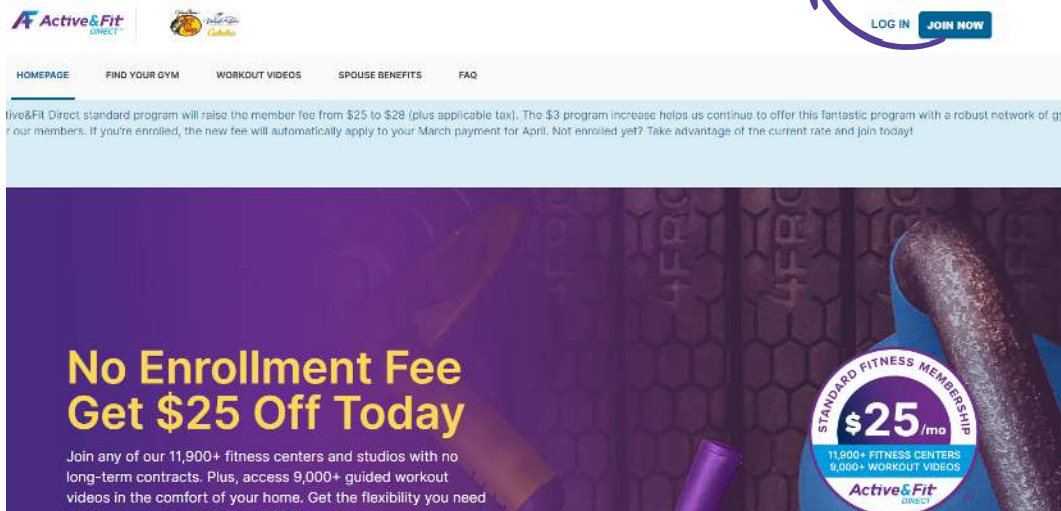
4. Follow the Outfitter Link and register your account!

- Registering your account is completely **free**. Upon registration you will be able to search for local fitness centers that participate in the program.
- **If you choose to enroll - in the Active&Fit Direct program you will begin paying \$25 monthly and receive access to:**
 - Local and nationwide fitness centers
 - Over 9000+ virtual / on -demand workout programs.
 - Once enrolled - you can enroll your spouse or domestic partner.
 - **No long term contracts - you can cancel at any time.**

Please note - this link is exclusive to Outfitters through our partnership with Active&Fit Direct and is only accessible through Workday. Sharing the link is not permitted.



5. Click on Join Now to create your Active&Fit account.



- Follow the easy, 2-step process to create your account.

Create an Account

Step 1 of 2

Please provide the following information as it appears on a valid ID.

First Name

Last Name

Date of Birth

Email

I have read and agree to the [Terms & Conditions](#).



Create an Account

Step 2 of 2

Username

Please enter a username.

Password

Security Question

Security Answer

6. Account Confirmation. After clicking "Register" on step 5, you will be taken to a confirmation page as seen below. You will also receive a confirmation email.

